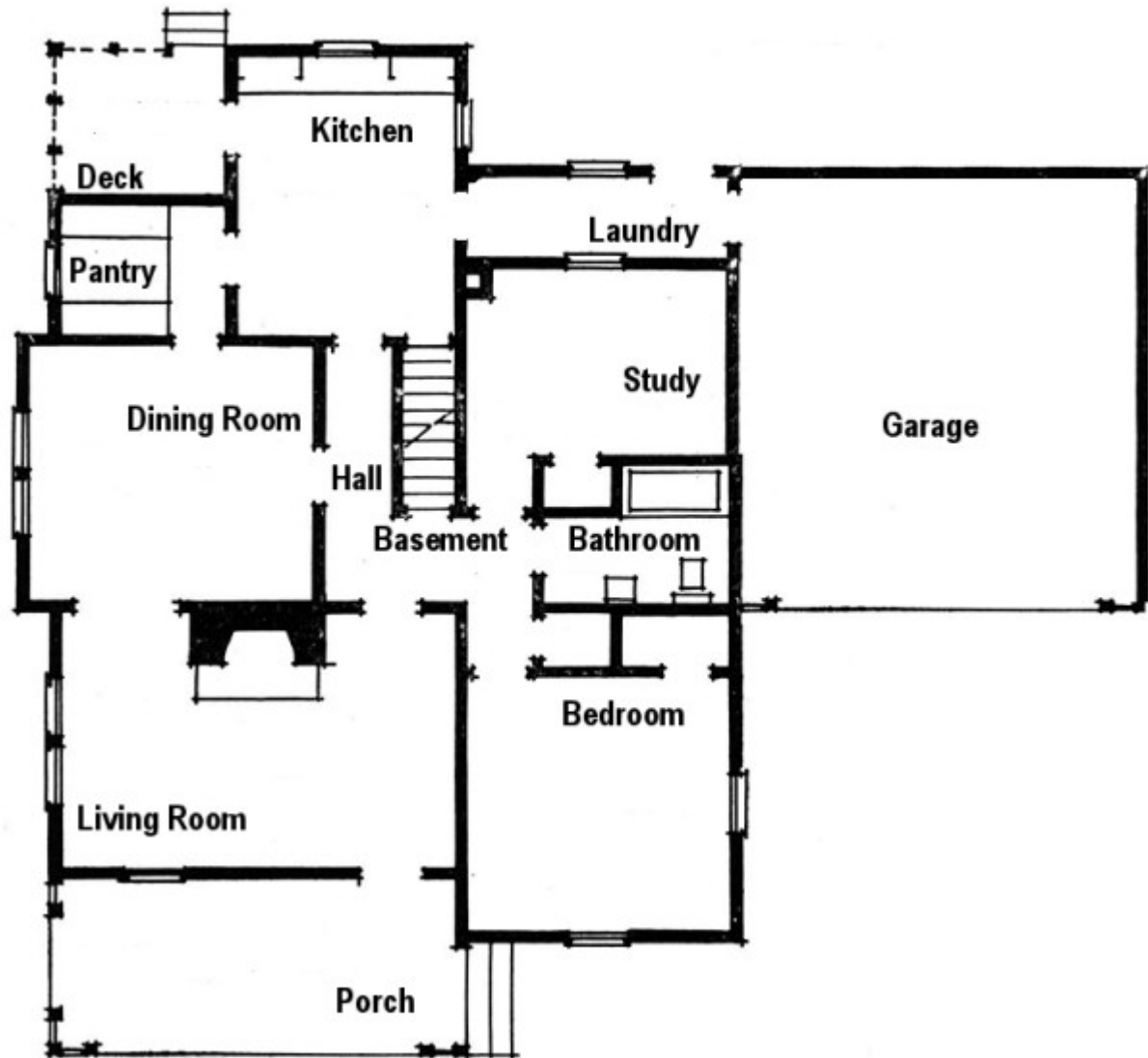


My House Floor plan

Assign each room to a different area of your life. For example: sexuality, relationships, stuff, family, respect, language, education, etc. Then assign each room a value from 1 to 10, indicating how much you have surrendered that particular area in your life (room) to Christ. You can also add additional rooms as needed off the laundry area.



Discussion Questions:

1. Which rooms in your house does Christ really have control of?
2. Which ones does He not control? Why?
3. What can you do in each room to surrender that area of life to Jesus?
4. What is one thing you can do this week to give your life to Christ and live a life of holiness?